



TaskArchitect

Taking the work out of Task Analysis

TaskArchitect™ makes task analysis an easier and more manageable process.

Whether using task analysis for complex system design or to create documentation or training materials, TaskArchitect enables users to work more efficiently and produce exceptional results.

- Simplicity and speed in recording and organizing tasks
- Point and click creation of plans, with logic clearly shown
- Automatic re-numbering of tasks and plans after each edit
- Automatic generation of a variety of clearly laid out task diagrams
- Flexibility in recording task details
- Support for any analysis goal
- Support for collaboration between analysts
- Rapid production of reports
- Easy export for re-use in other tools

TaskArchitect v2 Takes task analysis to the next level

Some of the new ways TaskArchitect can enhance your task analysis:

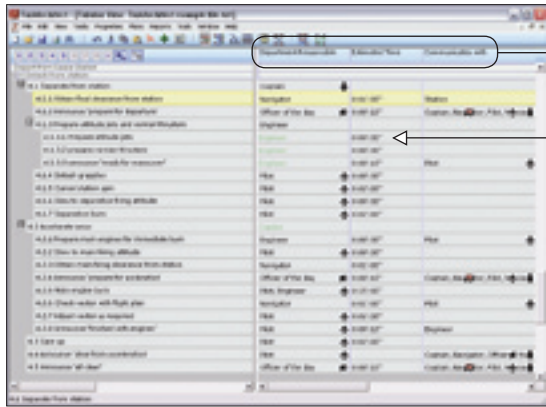
- Training Needs Analysis calculations – DIF
- Timelines – show how tasks fit together in sequence
- Link Analysis – examine how task attributes are related
- New templates – including Human Error Analysis (SHERPA)
- Additional task highlighting – box shapes
- Faster data entry
- Import tasks, properties and property definitions
- Faster printing – automatic layout of hierarchy across pages
- Custom report templates
- Spell checker and Analysis checker
- Professional, Standard and free Reviewer Editions

TaskArchitect Free Trial

Try out TaskArchitect and see how it can help to produce better task analyses.

See www.TaskArchitect.com for further information and pricing.

Tabular View

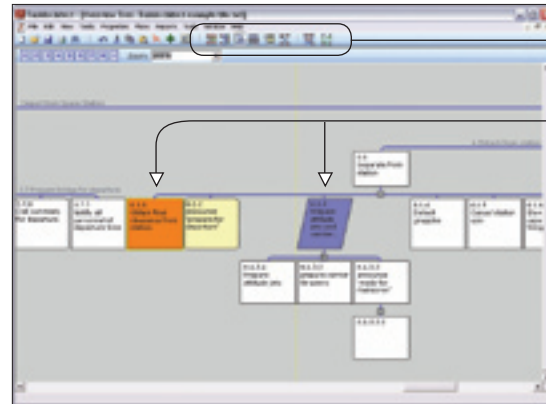


Task properties

Enter values directly into the table

Show up to 35 task properties at once

Overview One of the analysis diagrams

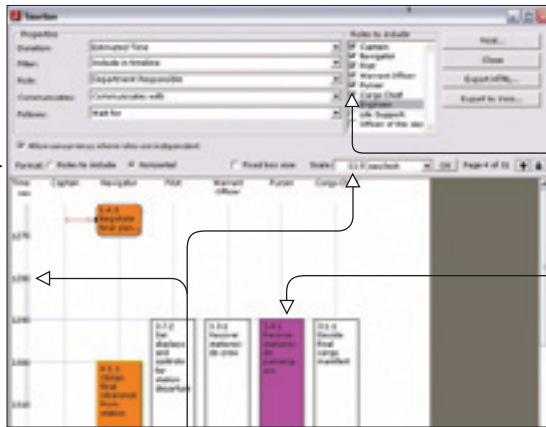


Multiple views of the analysis

Highlight tasks automatically

Drag tasks to change the analysis

Timeline Show how tasks fit together in sequence



Select which roles to display

Select the time scale
Vertical or horizontal layout

Page View



Large hierarchy automatically split into logical pages for printing

